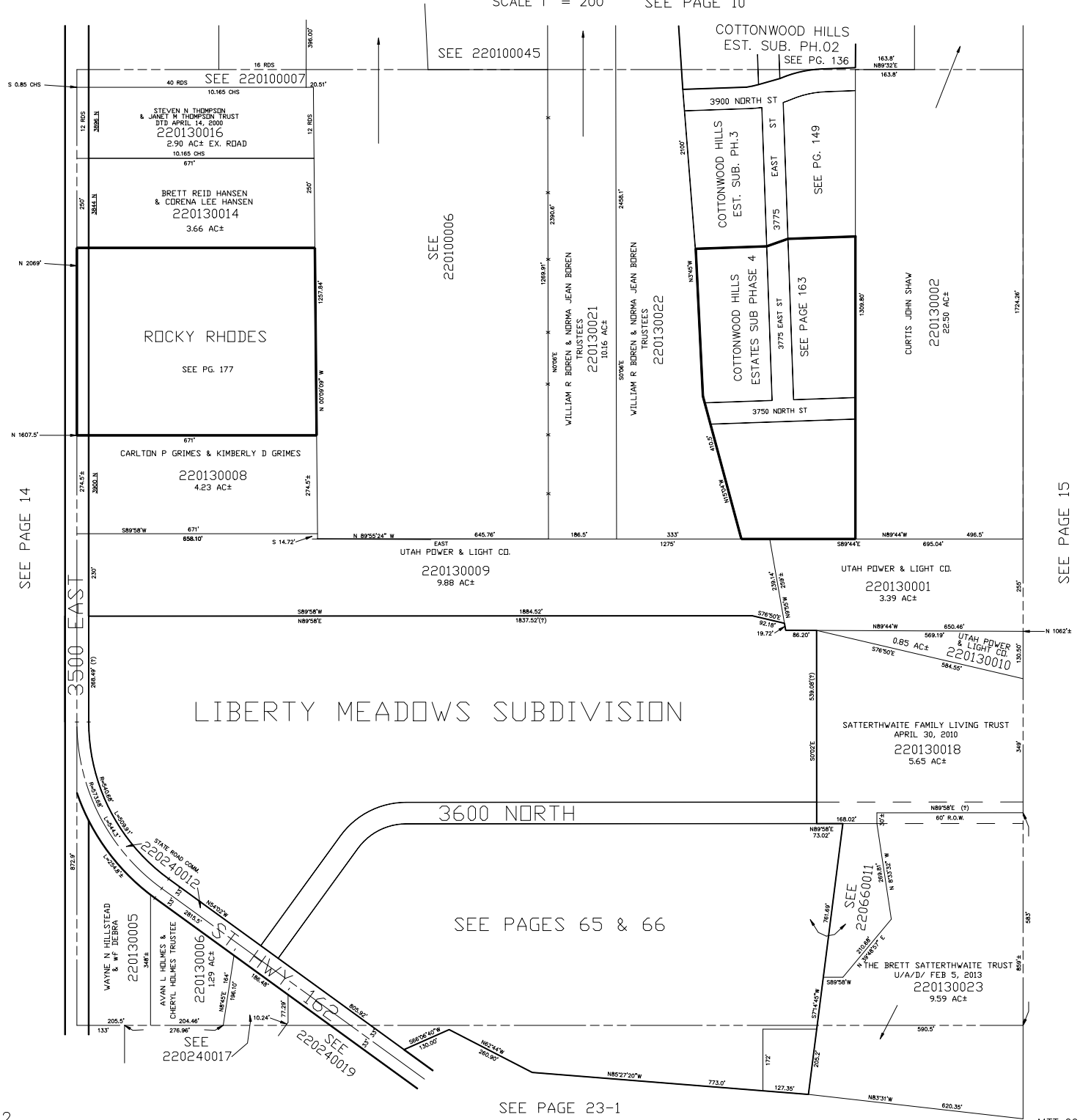


TAXING UNIT: 36

S.E. 1/4
SECTION 20, T.7N., R.1E., S.L.B. & M.

IN WEBER COUNTY
SCALE 1" = 200' SEE PAGE 10



SEE PAGE 14

SEE PAGE 15

SEE 220100045

SEE 220100006

COTTONWOOD HILLS
EST. SUB. PH.02
SEE PG. 136

COTTONWOOD HILLS
EST. SUB. PH.3

COTTONWOOD HILLS
ESTATES SUB PHASE 4

STEVEN N THOMPSON
& JANET M THOMPSON TRUST
DTB APRIL 14, 2000
220130016
2.90 AC± EX. ROAD
10.165 CHS
671'

BRETT REID HANSEN
& CORENA LEE HANSEN
220130014
3.66 AC±

ROCKY RHODES
SEE PG. 177

CARLTON P GRIMES & KIMBERLY D GRIMES
220130008
4.23 AC±

WILLIAM R BOREN & NORMA JEAN BOREN
TRUSTEES
220130021
10.16 AC±

WILLIAM R BOREN & NORMA JEAN BOREN
TRUSTEES
220130022

CURTIS JOHN SHAW
220130002
22.20 AC±

UTAH POWER & LIGHT CO.
220130009
9.88 AC±

UTAH POWER & LIGHT CO.
220130001
3.39 AC±

SATTERTHWAITE FAMILY LIVING TRUST
APRIL 30, 2010
220130018
5.65 AC±

THE BRETT SATTERTHWAITE TRUST
U/A/D/ FEB 5, 2013
220130023
9.59 AC±

SEE PAGES 65 & 66

SEE PAGE 23-1